

READING HALL OF FAME

NEWSLETTER FALL 2018

CONTENTS

- 3 A LETTER FROM THE PRESIDENT
- 5 HISTORIAN'S CORNER
- 6 A NOTE FROM THE TREASURER
- 7 EMERGING SCHOLARS
- 13 MEMBER UPDATES

SAVE THE DATE

We will hold our annual Reading Hall of Fame Breakfast
at the Literacy Research Association Annual Conference:

Reading Hall of Fame Breakfast
7:15 to 9:15 am
Meeting Room Malta A&B
Renaissance Esmeralda - Indian Wells Resort & Spa
Indian Wells, CA

A LETTER FROM THE PRESIDENT



D. Ray Reutzel

Dear Reading Hall of Fame
Colleagues:

If you haven't taken a look at the Reading Hall of Fame website lately (<https://www.readinghalloffame.org>), you might go there and check it out. Our Historian, Norm Stahl, has spent a good deal of time getting the photos of the members of RHF updated and encouraging RHF members to update their own information on the RHF website. He has also worked to get the posthumously awarded RHF members websites updated as well. Every great organization is built upon the foundation of former contributors. Norm has done an excellent job of also archiving and organizing the historical documents of RHF for future access.

Our secretary, Jan Dole, has worked this year to revise, update, seek and obtain RHF Board approval for changes in election and nominations bylaws in part due to our moving the annual meeting from the

International Literacy Association to the annual meeting of the Literacy Research Association. Since a five-year-old motion to elect annually six new RHF members sunsets this year, the membership, at our 2018 Breakfast/Business Meeting at LRA, will need to determine how many RHF members should be elected annually in the years ahead as well as the distribution of these members between national and international.

RHF Treasurer, Patricia Anders, has worked very hard this past year setting up a banking account for RHF that allows international and national RHF members to process payments electronically. One would think this a simple matter, but it was not! Patty worked diligently to comply with U.S. Banking Regulations to effect this change and opportunity for our membership. If you have not paid your one-time dues to the organization, you need to do so because we cannot carry out our programs supporting young scholars and annual meetings without member dues.

The RHF Newsletter Editorial staff, Jim Hoffman and team, have been organizing for the 2018 LRA meeting to record the details of our scheduled events and photograph our new inductee ceremony, annual breakfast/business meeting and the mentoring and inaugural presentation sessions at LRA. Thanks to this dedicated group of professionals for their production of the RHF annual newsletter that keeps all of us informed of the doings of the RHF (<https://www.readinghalloffame.org/newsletters>)! Their service to the organization is greatly appreciated.

Dr. Jim Baumann and his RHF Emerging Scholar selection committee worked hard this past fall to evaluate dozens of applications for the RHF Emerging Scholar awards. Two recipients, 1) Dr. Lydiah Kiramba, and 2) Dr. Courtney Hattan were selected along with their RHF mentors, Drs. Jill Fitzgerald and Shirley Brice Heath. Congratulations to these award recipients and their RHF mentors! Thanks to Dr. Baumann and the members of his committee (listed below) for their service to RHF and the selection of these outstanding recipients.

Reading Hall of Fame

*Emerging Scholars Fellowship
Committee (2017-2018)*

*Patricia Edwards, Michigan State
University (appointed 2016)*

*Judith A. Langer, University at
Albany, State University of New York
(appointed 2016)*

*Stuart McNaughton, The University
of Auckland, New Zealand (appointed
2015)*

*Donna Ogle, National-Louis
University, Emerita (appointed 2015)*

*Sheila Valencia, University of
Washington (appointed 2015)*

*James F. Baumann (Chair), University
of Missouri, Emeritus (appointed
2014)*

I am pleased to share with you the eventful 2017-2018 year we are about to conclude in the Reading Hall of Fame. With the move from ILA to LRA, ILA has been most gracious to retain for us from year to year a special RHF session slot at the Annual Meeting of ILA. This past July, RHF members presented

A LETTER FROM THE PRESIDENT, *continued*

a special session at ILA in Austin entitled, "A Critical Examination of four Policy Briefs from the ILA Literacy Research Panel: Assessment in Teaching, Vocabulary and Second Language Learners, Content Area and Disciplinary Literacies, and Pre-K Literacy Instruction." Four members of the Reading Hall of Fame took the lead in presenting responses to these briefs: James Cunningham, Professor Emeritus, University of North Carolina at Chapel Hill, Mary Ellen Vogt, Professor Emerita, California State University, Long Beach; Donna Alvermann, The University of Georgia, and Lesley Morrow, Rutgers University. Diane Lapp, the current chair for the Literacy Research Panel, chaired the session and offered background on the work in the development of these Briefs.

I have been working this past year with LRA's Caitlin Hyatt and Marcelle Haddix to make the move from ILA to LRA. We have designed a new mentoring meeting at LRA for participants and RHF members. November 30, 2018 will be the first Reading Hall of Fame Mentoring session at LRA. Those RHF members participating include: Jeanne Paratore, Peter Afflerbach, Kris Gutierrez, Janice Dole, Diane Lapp, MaryEllen Vogt, Lesley Mandel Morrow, Ray Reutzel, Gay Ivey, Judith Langer, Jane Hansen, and Patricia Edwards.

In addition, we have designed a special session for RHF and LRA participants. Our last year's RHF inductee's will make their inaugural presentations on November 30, 2018 during the LRA meeting -- Heather Bell, Donna Scanlon, Norman Stahl, and MaryEllen Vogt.

Our annual breakfast meeting will be held at 7:15AM on December 1, 2018. At this meeting, we will induct six new living members of the Reading

Hall of Fame: Dorit Aram, Margaret Clark, Steve Graham, Elizabeth Birr Moje, Pekka Niemi, and Annemarie Palincsar. Two RHF members will also be inducted posthumously: Susan Mandel Glazer and Clarence T. Gray. We will also held our annual business meeting directly following our Annual Breakfast Meeting where a tribute to Dr. Bill Teale will be offered and election and nomination bylaws will be discussed.

This past summer, I solicited nominations from the RHF membership to serve as President-Elect. Over a dozen nominations were received. I contacted each nominee personally to determine if they would be willing to serve. Dr. Diane Lapp was elected to serve as the Reading Hall of Fame President-Elect. She will assume the Presidency of RHF at the conclusion of the 2019 meeting of the Reading Hall of Fame. As you can see, it has been a busy year for the Reading Hall of Fame.

As per our bylaws, a call for nominations for electing new RHF members will go out from RHF Secretary, Janice A. Dole, in March 2019. These newly elected RHF members will be inducted into the RHF during our 2019 RHF Annual Breakfast and Business Meeting.

I want to thank all those who have been so willing to step up and serve the membership of the Reading Hall of Fame in any way and in many roles. Without their willing and able service, the RHF would not be able to pursue effectively its stated mission to:

"... contribute, from the collective experiences of its members, to further improvement in reading instruction in such ways as the following:

- *presenting co-sponsored meetings at the annual meetings of related organizations;*

- *disseminating the information from the papers presented in such meetings through ERIC and/or publications of related organizations;*
- *indicating needed research, and trends of the past that hold promise for the future;*
- *facing current issues in reading, and discussing them in open forum suggesting possible solutions."*

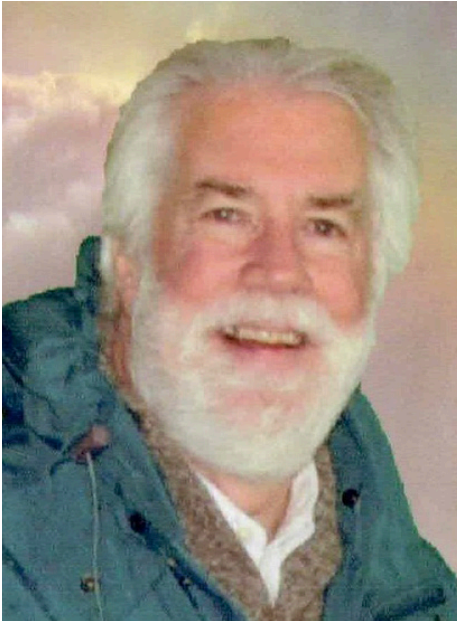
I look forward to another productive year for the RHF organization and thank you for the opportunity to serve.

Warmest regards,



D. Ray Reutzel, President
Reading Hall of Fame

HISTORIAN'S CORNER



Norm Stahl

Across the past year the RHF Historian's focus has been to continue the webpage work begun under Donald Leu. Particular attention has been directed toward the development of the respective homepage for each of the Reading Hall of Fame members and Reading Hall of Fame Pioneers who have passed away. Progress has been made to the degree that both graduate students and faculty can now peruse any of

the 123 homepages to learn of the contributions provided by each of our colleagues and heroes from the past. As you review the individuals' sites you will admittedly find that there is still need for a degree of reorganization of a number of sites so as to provide a greater degree of parallel structure across the home pages. Still, we now have a photo or likeness for virtually every individual. Other types of artifacts include obituaries, biographies, memorials, interviews, classic articles, curriculum vitae, and tributes. This is now one of the more important archives for our profession.

During the weeks ahead, it is requested that you visit several of the RHF homepages for those deceased members who have impacted your career, and if it strikes your fancy, it would be of particular assistance to your Historian if you might write a brief tribute for an individual who does not yet have such on his or her homepage. These do not need to be extensive as the excellent examples provided for A. Sterl Artley by Richard Robinson, for Harold Herber by Kathy Hinchman and Donna Alvermann, or Jean Robertson by David Pearson fit the bill nicely. Of course, there are longer tributes as

has been provided by Tom Sticht for Jeanne Chall. If you are so willing to undertake such an activity, simply e-mail your contribution as a word document to your RHF Historian at flowercjs@aol.com.

Now as for your own RHF homepage. Let's make 2019 the year of bringing your RHF homepage up to date. You can do that task yourself, but if you need help accessing your homepage, send your RHF Historian an e-mail, and we can tackle that problem together. You ask, what might you provide?... How about a new photo, an up to date vita, an article that capsulizes your contributions to the field, a biography or an oral history, among other possible documents. If you prefer that your RHF Historian upload your documents to your homepage, simply e-mail them as attachments (we might chat as to the form to be taken for each particular document).

Finally, for those of you who have served as officers of the RHF, it is time to clean out your file drawers or unload those computer files. Please consider sending these paper or digital files to your RHF Historian so as to preserve your legacy in the RHF archives.

A NOTE FROM THE TREASURER



Patricia Anders

Being Treasurer is a wonderful task to soften the shock of retirement, which was official on May 21, 2018. After fifty years of professional life, it is terrific to have a few commitments and this obligation is an excellent transition.

As I write this, I am hearing from friends and colleagues from around the world regarding plans to attend the RHOF annual breakfast. The breakfast is Saturday December 1, 2018 at the annual meeting of the Literacy Research Association.

RHOF requires the Treasurer to collect membership dues. Dues are as follows: \$250 lifetime, for those members inducted in 2017 to present; Members inducted 2005-2015, \$100; and Members inducted 2004 or prior, \$50.

According to RHOF records, 21 members, inducted prior to 2007 each owe \$50. If they would pay, our balance would increase by \$1,050. Likewise, eleven members inducted between 2007 and 2017 have not paid their dues, which would increase our balance by \$1,100. Finally, five members inducted between 2017 and 2018 have not paid dues, which shorts our balance by \$1,250. If you do not know if you owe dues, send me an email or ask me at LRA. My email is planders@u.arizona.edu

As reported previously, RHOF is mostly dependent on income from dues. The only other income is royalty from Taylor and Francis, approximately \$200. Expenses include the cost of maintaining the organization (printing and web master), travel awards for Emerging Scholars, and a graduate student stipend for the Newsletter.

Income for 2018 was \$1,570.09 and Expenses were \$2,026.24. We have 132 living members and 82 have paid dues. In an effort to make it easier to pay dues, we have added a Pay Pal button to the RHOF web site. Simply go the RHOF web site, click on Home, and select Pay Fees/Donate.

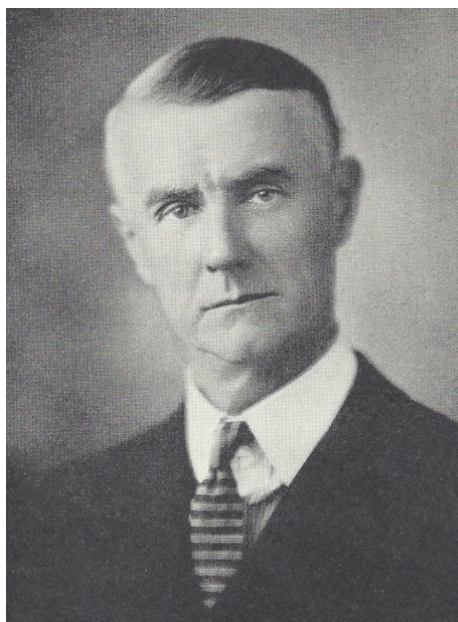
2018 INDUCTEES

DR. SUSAN MANDEL
GLAZER*posthumous honoree*

Internationally recognized for her many contributions to literacy education worldwide, Dr. Susan Mandel Glazer, 78, of Lawrenceville, NJ, passed away Feb. 13, 2017. Born in Jersey City, Dr. Glazer was a graduate of Syracuse University (B.A.), New York University (M.A.) and University of Pennsylvania (Ed.D). During her 45 years at Rider University, Dr. Glazer made tremendous contributions to literacy education worldwide. She spoke at local, state, national and international professional meetings in all 50 states and in 29 countries of the world. She served as president of the prestigious International Reading Association (IRA). Among the many awards she earned were: IRA Teacher Educator of the Year, Rider University's Faculty Research Prize and over 200 literacy awards from reading councils across the world. Dr. Glazer loved teaching children to read and college students how to teach reading. She founded and chaired the graduate program at Rider University that prepared teachers to be reading specialists. She also established

the Center for Reading and Writing where children ages 5 through 17 worked with graduate students. Throughout her 35 years as director of the Center for Reading and Writing, she authored 18 books and more than 200 articles on literacy education.

DR. CLARENCE T. GRAY

posthumous honoree

Born in Russel, Kansas, Clarence Truman Gray (1877-1951) was the son of Bingham and Evangeline Gray. Raised near Gosport, Indiana, Clarence T. Gray graduated with an undergraduate degree in mathematics from Indiana University in 1905, and went on to earn a Master's in 1911 and a Ph.D. in 1916 from the University of Chicago. After completing his dissertation on reading habits, Gray became a faculty member in the Department of Educational Psychology at the University of Texas at Austin. In conjunction with his dissertation, Gray had also invented an instrument to track eye movements during reading sessions

which he further developed at the University of Texas. From 1926 to 1948, Gray served as the Chair of his department and as acting Dean of the College of Education in 1947. A prolific writer, Gray was the author of many publications on educational psychology, including *Types of Reading Ability* (1917) and *Deficiencies in Reading Ability* (1922).

DR. STEVE GRAHAM



Dr. Steve Graham, Warner Professor in Leadership and Innovation at Arizona State University, is widely recognized as a consummate researcher who focuses on writing and reading processes and instruction for both typically developing students and students with special needs.

Steve has published over 300 works, including articles in prominent outlets such as *Reading Research Quarterly* and *Reading and Writing*. Steve's national/international service is extensive—often at the forefront of promoting literacy reform efforts. Among many service accomplishments, Steve has been a literacy consultant/panelist for a variety of organizations, including UNESCO, the National Institute of Health, and the National Writing

2018 INDUCTEES

Project. He is former editor of four journals including the *Journal of Writing Research* and current editor of the *Journal of Educational Psychology*.

Notable recognitions of an impactful career include the prestigious American Educational Research Association Fellow status and Fellow status at the International Academy for Learning Disabilities Research.

DR. DORIT ARAM



Dorit Aram is the head of the School Counseling program at Tel Aviv University. Her research focuses on adult-child interactions and their implications for early development. She investigates the nature of adult-child literacy interactions (writing and book reading) in both Hebrew and Arabic and studies their implications on early literacy and socio-emotional development. Addressing the needs in special populations, her work examines literacy interactions in parent-child dyads of children with special needs and from low SES. Prof. Aram has conducted literacy interventions aimed at improving teachers' and parents' scaffolding and children's literacy and socio-emotional development.

Prof. Aram served on the board of the Society for Scientific Studies of Reading and represents Israel on the European Literacy Network. She was and is on the editorial boards of several journals including *Reading Research Quarterly*, and *Early Childhood Research Quarterly*. She is a board member of the Israel Literacy and Language Society and served as its co-president. Aram has published articles in journals such as *Reading Research Quarterly*, chapters in major volumes (e.g., *Handbook of Early Literacy*), and has co-edited books, including *Literacy Development and Enhancement across Orthographies and Cultures*.

DR. ELIZABETH BIRR MOJE



Elizabeth Birr Moje is Dean, George Herbert Mead Collegiate Professor of Education, and an Arthur F. Thurnau Professor in the School of Education at the University of Michigan, Ann Arbor. Moje teaches undergraduate and graduate courses in secondary and adolescent literacy, cultural theory, and research methods and won the Provost's Teaching Innovation Prize in 2010.

A former high school history and biology teacher, Moje studies youth culture, identity, and literacy in Detroit, Michigan. Moje has published 5 books and numerous articles in journals such as *Science Education*, *Harvard Educational Review*, *Teachers College Record*, *Reading Research Quarterly*, *Journal of Literacy Research*, *Review of Education Research*, *Journal of Research in Science Teaching*, and *Journal of Adolescent & Adult Literacy*.

The National Institutes of Health/NICHD, John S. and James L. Knight Foundation, National Science Foundation, William T. Grant Foundation, Spencer Foundation, International Reading Association, and the National Academy of Education have funded Dr. Moje's research. Moje is a member of the National Academy of Education.

DR. MARGARET CLARK



Margaret Clark began her distinguished career with two very different studies, both of them timely and influential. Against a widespread concern with dyslexia, she studied a cohort of more than 1,500 children, focusing on those

2018 INDUCTEES

who had difficulty in learning to read, finding a pattern of widespread learning difficulties among the few children involved. The other study involved a small group of five-year-olds, already able to read fluently. These studies refocused literacy research and set the course for a lifetime of illuminating work, culminating in three important books in the last three years.

A Past President of the United Kingdom Literacy Association, she was awarded the UKLA Academic Book Award in 2015 for *Learning to be Literate: insights from research for policy and practice*, which includes a critique of government policy in England on synthetic phonics. She is a Visiting Professor at Newman University, UK and Emeritus Professor at the University of Birmingham.

DR. PEKKA NIEME



Pekka Niemi has a distinguished record as a literacy researcher. Following a Fulbright scholarship at the University of Oregon Eugene (1974-75), his first peer-reviewed research article appeared in 1975, and he is active to this day,

particularly on beginning reading and its difficulties, especially dyslexia. He has held senior academic positions at the University of Turku, the Academy of Finland and Åbo Akademi University in Finland, and the University of Stavanger in Norway.

He is a long-term member of the IRA/ILA and the Society for the Scientific Study of Reading. He has served on the editorial review boards of *Reading Research Quarterly*, *Journal of Research in Reading* and *Journal of Learning Disabilities*. He held a specialist role within the influential European Union-funded project "Reading acquisition and disability in European orthographies" which studied the progress of children learning to read in 14 languages across 15 countries.

His publications include about 100 in English, and many more in Finnish and Swedish. Among the doctoral theses he has supervised is that of Ann-Sofie Selin, former IRA Board member. His prizes include the International Reading Association's International Citation of Merit in 2004.

DR. ANNEMARIE PALICSAR



Annemarie is the Jean and Charles Walgreen Jr. Chair of Reading and Literacy, Arthur F. Thurnau Professor, and a teacher educator at the University of Michigan.

Annemarie's primary research interest is in sense making and knowledge building with multiple media, especially in the context of project-based scientific inquiry.

She has served on a number of National Research Council study groups, including Preventing Reading Difficulties in Young Children, Preparing Future Teachers, and How People Learn: Volume II. She has been active in professional organizations, serving as a member of the Literacy Research Panel for the International Reading Association (IRA), executive board member for the National Academy of Education, and member-at-large for the American Educational Research Association.

She is a member of the National Academy of Education and is an American Educational Research Association Fellow. Annemarie completed her doctorate at the University of Illinois.

EMERGING SCHOLARS

The Reading Hall of Fame Emerging Scholars Fellowship supports new literacy faculty by pairing them with Reading Hall of Fame mentors during their first two years of a college or university tenure-track appointment. The program is intended to help emerging scholars to maintain their focus on research and publication as they make their way from the mentored experience of doctoral study to the competing demands of a

full-time, faculty position.

Reading Hall of Fame mentors maintain regular contact with their fellows and are encouraged to meet with them face-to-face at professional meetings. The ESF program is designed to be flexible and responsive to fellows' needs, although common activities include reviewing drafts of manuscripts and conference proposals, supporting efforts to seek

funding for research, and offering guidance in how to balance the various expectations university faculty face in the arenas of teaching, research, and service.

Current funding permits the awarding of two fellowships each year. The two 2017 Reading Hall of Fame Emerging Scholars Fellows are Dr. Courtney Hattan and Dr. Lydiah Kananu Kiramba.

COURTNEY HATTAN



Mentee: Courtney Hattan
Mentor: Dr. Jill Fitzgerald, Professor Emerita at The University of North Carolina at Chapel Hill

Dr. Courtney Hattan is a recent graduate of the educational psychology program at the University of Maryland, College Park. Her doctoral advisor was Patricia Alexander. Courtney has accepted an assistant professor position at Illinois State University effective this coming fall semester. Courtney's interest is in the interplay between readers' knowledge and their reading comprehension, a research focus that emerged from her considerable experience teaching struggling middle-grade readers in rural North Carolina and inner-city Baltimore. Dr. Jill Fitzgerald has agreed to serve as a mentor for Courtney.

LYDIAH KANANU KIRAMBA



Mentee: Lydiah Kananu Kiramba
Mentor: Dr. Shirley Brice Heath, Professor Emerita, Margery Bailey Professorship in English, at Stanford University

Dr. Lydiah Kananu Kiramba is a graduate of the Language and Literacy program in Curriculum and Instruction at the University of Illinois at Urbana-Champaign. Her doctoral advisor was Violet Harris. Lydiah is an assistant professor of literacy in the Department of Teaching, Learning, and Teacher Education at the University of Nebraska-Lincoln. Dr. Kiramba research interest is in multilingual competencies, which she characterizes as understanding the "voices of emerging multilinguals of immigrant

and refugee backgrounds." Her goal is to "recognize and advance our understanding of the multilingual and multicultural nature of our classrooms today across the globe." Her research, initially conducted in her native Kenya, continues internationally and in US contexts. Her inquiries involving the interrelated and complex relationships among reading, writing, and disciplinary knowledge acquisition among multilingual learners has significant potential. Dr. Shirley Brice Heath has agreed to serve as a mentor for Lydiah.

EMERGING SCHOLARS, *continued*

With Courtney and Lydiah's being named 2018 Emerging Scholar Fellowship recipients, this brings to 21 the total number of Fellows since the program's inception in 2013. The full list of Fellows and mentors by year is as follows:

2018	2015	2013
Courtney Hattan, University of Maryland, College Park <i>mentor: Jill Fitzgerald</i>	Eliza Allen, University of South Carolina, Columbia <i>mentor: Judith Green</i>	Dawan Coombs, Brigham Young University <i>mentor: Judith Langer</i>
Lydiah Kananu Kiramba, University of Illinois at Urbana-Champaign <i>mentor: Shirley Brice Heath</i>	Tracey Hodges, University of Southern Mississippi <i>mentor: Timothy Shanahan</i>	Katherine Frankel, Boston University <i>mentor: Donna Alvermann</i>
2017	Jaye Thiel, University of Tennessee, Knoxville <i>mentor: Hilary Janks</i>	Kelly Puzio, Washington State University <i>mentor: Gerald Duffy</i>
Sara Lupo, James Madison University <i>mentor: Sheila Valencia</i>	2014	Dana Robertson, University of Wyoming <i>mentor: Peter Afflerbach</i>
Jennifer Reichenberg, Medialle College <i>mentor: Taffy Raphael</i>	Katherine Batchelor, Miami University <i>mentor: Jane Hansen</i>	Patriann Smith, University of Illinois at Urbana-Champaign <i>mentor: Vicki Risko</i>
2016	Robert Price Gardner, Mary Washington University <i>mentor: Kathryn Au</i>	
Michiko Hikida, The Ohio State University <i>mentor: Robert Jiménez</i>	Logan Manning, University of Texas, San Antonio <i>mentor: JoBeth Allen</i>	
Laura Tortorelli, Michigan State University <i>mentor: Elfrieda (Freddy) Hiebert</i>	Sandra Osorio, Illinois State University <i>mentor: Nancy Roser</i>	
	Blaine Smith, University of Miami <i>mentor: Donald Leu</i>	
	Yang Wang, University of South Carolina <i>mentor: Yetta Goodman</i>	
	Phillip Wilder, Clemson University <i>mentor: Jan Dole</i>	

UPDATES FROM OUR MEMBERS 2018

DENNY TAYLOR



Professor Emerita, Hofstra University
Denny.Taylor@Hofstra.edu

In July 2018 I participated in the two week U.N. High Level Political Forum (HLPF), which focused the Sustainable Development Goals (SDGs). I submitted a report to U.N. representatives based on: 1) ethnographic observation and documentation of the U.N. 2018 HLPF; 2) participation in side events during the U.N. General Assembly (UNGA); 3) attendance at planning meetings for the HLPF and UNGA; and 4) a sociolinguistic analysis of the extensive documentation pertaining to the SDGs and the HLPF, including email and video communications, website presentations, official reports and papers, scientific research studies, and media coverage and commentary. The report is available for consideration on my website, which also includes papers that pertain specifically to U.N. family literacy, SDGs and peacebuilding initiatives and programs, as well as a 40 year retrospective of my research and my c.v. Briefly, my transdisciplinary research addresses the great acceleration of human activity that is negatively impacting human societies and the planet;

while my field experience in regions of armed conflict and catastrophic events, plus fieldwork with families living in extreme poverty, impacted by opioid addiction, and racism, discrimination and gender inequality, parallels the work of many U.N. representatives, U.N. member states presenting Voluntary National Reviews (VNRs), non-government agencies (NGOs) presenting on the SDGs, and civil society and the private sector participants in HLPF and UNGA. So far I have received positive feedback on the report and it is now with various groups participating in the organization of the 2019 HLPF. Here is the link to the report: www.dennytaylor.com/latest-news/2018/un-2018-hlpf-sustainable-development-goals-peer-review-report. In addition to the HLPF report I've included links to the U.N. referenced papers I have written that focus on SDGs, peacebuilding and family literacy. My website can be accessed here: www.dennytaylor.com. My latest research is here: www.dennytaylor.com/latest-news. My research on climate change and the relationships between people and the planet is here: www.dennytaylor.com/climate-change. And, finally, a 40-year retrospective of my family literacy research is here: www.dennytaylor.com/research-retrospective. Other initiatives can be accessed on the website of Garn Press, the publishing initiative I founded in 2013 to support writers of conscience, especially teachers and scientists. You can access the website here: <http://garnpress.com/>.

TOM NICHOLSON



Distinguished Friend, Massey University, New Zealand
t.nicholson@massey.ac.nz

I have published something! It is a book on teaching writing, took ages but it is finally out - <https://www.nzcer.org.nz/writing-for-impact> I retired April Fools' Day 2018 to become, umm, not sure yet. The worst part was cleaning out the office but I read a book on de-cluttering by Marie Kondo and her strategy was keep only the books that give you joy. It was a weird thing to look at a book that way but since there was no room at home and I had to get rid of the books, she galvanised me to let them go. I was worried about retirement (or re-wirement) but friends told me the answer was to find something that makes my heart sing and I might just have found something: sketching. I reluctantly agreed to go with my wife on a sketching tour in September to Spain and Morocco and had no intention of sketching but once we got to Granada and I saw the group sketching, I changed tack and joined them. Although I never have drawn before, it was fun, very sociable, and nice people. The tutor, Erin Hill, based in Sydney, runs several European tours a year and

UPDATES FROM OUR MEMBERS, *continued*

has classes in France and America: <https://erinhillsketching.com>. She is amazing, a great teacher even for a klutz like me. In Tangier, at a hotel where Matisse once stayed, the hotel manager, looking at my simple drawing, said I was even better than Matisse – there is hope for me yet!

RITA BEAN



Professor Emerita, University of Pittsburgh
ritabean@pitt.edu

It's been a busy year, both professionally and personally. Our ILA Committee completed its work on the 2017 Standards for Preparing Literacy Professionals. What a pleasure to work with my co-chair, Diane Kern, and a team of committed and knowledgeable literacy educators. We published several articles related to the standards: Preparing Reading/literacy Specialists to meet Changes and Challenges, published in *Literacy Research and Instruction* and Multiple Roles of Specialized Literacy Professionals in *The Reading Teacher*. Allison Swan Dagen, Jacy Ippolito, Diane Kern and I completed a study of principals' perceptions of specialized literacy professionals

(*Elementary School Journal*, 12/2018). On a personal note, besides getting accustomed to our new home, we spent time with grandkids (and dog-sitting), and we traveled (as usual) to Omaha for the College World Series and then to Nova Scotia (fantastic place) and Arizona! I am so disappointed that I won't be there for the inaugural meeting of the RHF at the Literacy Research Association in December. Enjoy and hope to see you next year!

ROBERT THOMAS
JIMÉNEZ

Department of Teaching & Learning,
Vanderbilt Peabody College
robert.jimenez@vanderbilt.edu

Hello! This year marked my 28th year in academe and my 14th year in Vanderbilt's Peabody College. Last October my colleague, Amanda Goodwin, and I became the editors of *Reading Research Quarterly*. From the start of my career I have thought of RRQ as the leading journal for literacy research. I had little idea then how much work goes into every issue! Beginning with the untold hours that authors devote to their craft to the thoughtful reviews that

many of you write, to the work done by ILA staff and finally to our own editorial input, each issue represents an incredible amount of effort. I am, however, enjoying this work and Amanda and I appreciate your help. In addition, my colleagues and I were recently awarded the Lyle Spencer Award to refine and investigate our TRANSLATE project. TRANSLATE (Teaching Reading And New Strategic Language Approaches To Emergent bilinguals) is designed to support the reading comprehension of students who are learning English as an additional language. Students are taught how to identify information-rich segments of text that they then translate in collaborative learning groups. Our goal is to provide teachers of emergent bilinguals with a well-researched instructional approach that accelerates and improves these students' language acquisition and reading comprehension. An early publication focused on exploratory development of TRANSLATE was recognized with the Alan C. Purves Award in 2015 for research most likely to have an impact on instructional practice. We look forward to implementing our upcoming project. For fun, I continue to ride what are called adventure touring motorcycles. This past summer some friends and I completed the Mid-Atlantic Backcountry Discovery Route (MABDR) from Tennessee to New York state. In all, we covered over 1000 miles in about 10 days on unpaved roads through Virginia, West Virginia, Maryland and Pennsylvania, much of it through the mountains.

UPDATES FROM OUR MEMBERS, *continued*

HILARY JANKS

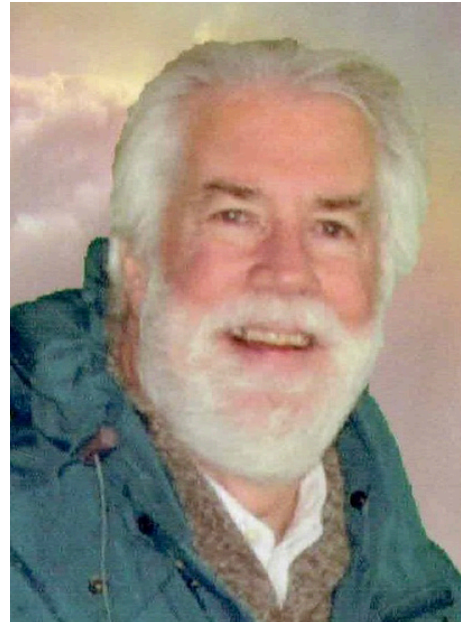


Wits University Emerita
 hilary.janks@wits.ac.za

In South Africa they retire you from Universities at 65, long before my sell-by-date. I have flunked retirement as so many others in the ROF. I am still writing - critical literacy and early literacy articles, chapters, a column for JAAL and presentations for conferences - always at least one at LRA and one in South Africa. At the last Literacy Association of South Africa (LITASA) conference I was the first recipient of a new award - Significant Contribution to Literacy - and was overwhelmed. I had no advance warning was literally (original meaning of the word) speechless. I teach overseas (US, Canada, Sweden, Brazil) whenever people invite me and have money to pay me, doing once-every-other year graduate courses in the summer term at Penn. As South Africa's currency declines I consider myself to be a migrant worker trying to earn foreign currency to remit home. (All offers welcome!). I try to spend time in the US to be with my my two granddaughters and their parents

in Boston whenever I can. The best part of being retired is that I get to choose what work to do, including some consultancy (which has taken me to Kenya, Uganda and Lithuania). There is little pressure and I have time to do gardening, silver smithing, reading and spending time with my family, including a grandchild in South Africa, my husband who recently retired, and my father of 93.

NORM STAHL



State Universities Retirement System
 flowercjs@aol.com

The year has seen our research team in the process of wrapping up a long term study of literacy practices in community college CTE programs. Two chapters appeared in the newest edition of the Handbook of College Reading and Study Strategy Research..."History" with James King and "Reading and Writing" with Sonya Armstrong and Jeanine Williams. Dr. Armstrong and I also had published a bitter sweet piece on the state of postsecondary reading and study strategy

instruction entitled "Re-claiming, Re-inventing, and Re-reforming a Field: The future of College Reading in the Journal of College Reading and Learning.

GREG BROOKS

University of Sheffield, UK
 g.brooks@sheffield.ac.uk

Treasurer, Federation of European Literacy Associations Member, UNESCO Literacy Core Group making recommendations to Global Alliance to Monitor Learning Advocate, 21st European Conference on Literacy, Copenhagen, Denmark, 4-7 August 2019: <http://cph2019.dk/> UK Government remains obsessed with synthetic phonics in initial literacy; now extending phonics to adult literacy. Most relevant recent publication attached.

THOMAS STICHT



International Consultant in Adult Education (Ret.)tgsticht@gmail.com

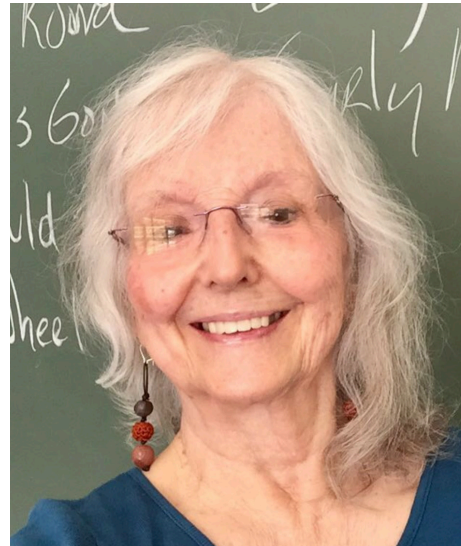
Early in 2018 I completed an e-book entitled: "Mainstreaming Marginalized Adults: The Transformation of Adult Basic Skills Education in the

UPDATES FROM OUR MEMBERS, *continued*

United States" (available at: https://www.researchgate.net/publication/324604141_Mainstreaming_Marginalized_Adults_The_Transformation_of_Adult_Basic_Education_in_the_United_States). It traces my work in adult basic skills education from 1952, when I met General of the Armies Dwight D. Eisenhower, up into the 2010s and briefly surveys my work on Functional Context Education, literacy and workforce development, and the intergenerational transfer of literacy. My earlier 2017 e-book, "The Struggle for Adult Literacy Education in America: A Trilogy Of Notes on History, Research, Policy, & Practice in Adult Literacy Education" was selected by the Coalition on Adult Basic Education (COABE) for inclusion in its web pages on the history of adult education in the U.S. (Available at: <https://static1.squarespace.com/static/55a158b4e4b0796a90f7c371/t/5a08848b8165f51550503a1d/1510507672628/Bk+Trilogy.1.pdf>). In the Fall of 2018 The Capital Adult Education Regional Consortium (CAERC) selected my paper on "The ABC's of Investing in Adult Literacy Education" to conduct a campaign advocating for adult education. In this paper I wrote a small note for each of the 26 letters of the alphabet about how adult literacy education pays off. The CAERC has developed illustrations to go along with each of the 26 alphabet letter notes. You can see samples of these notes at: (<https://www.dropbox.com/sh/se04wi3jdfkubqj/AObTUOGlKlAiunHSfweoNlta?dl=0>). Professionally, this year of 2018 I reviewed a couple of papers for the Journal of Literacy Research and the Reading Research Quarterly. Personally, I keep busy taking care

of yard work, pool cleaning, and maintenance activities around the house. How time flies!

DONNA ALVERMANN



The University of Georgia
dalverma@uga.edu

I've been around so long that people have stopped asking me if Jack and I are planning to have children and if I'm looking at a retirement date in the near future. That said, I love teaching and researching full time at The University of Georgia. I credit the doctoral and master's level students for keeping me fully engaged and up to my neck in reading, listening to podcasts, and attending their sessions at conferences. A project that dominated my academic life for the past two years was serving as lead editor of the 7th edition of Theoretical Models and Processes of Literacy along with Misty Sailors, Norman Unrau, and Robert Ruddell. The 7th edition's 30 chapters (more than half of which are new or revised) will be published by Routledge/Taylor & Francis in mid-October 2018. A new research project involving country and bluegrass songwriters in Athens,

GA, was inspired by my learning to flatpick at Steve Kaufman's Acoustic Kamp in Maryville, TN. Come June 2019, I'll be attending both the Old Time Week and Bluegrass Week. The accompanying photo was taken at Kaufman Kamp in 2017 when I was enrolled in Songwriting. Love me a guitar, Jack, and Jazz (our Golden Retriever) but not necessarily in that order.

TIMOTHY SHANAHAN



University of Illinois at Chicago
shanahan@uic.edu

Retirement is great. Currently, I'm chairing the William S. Gray Award Committee for the ILA, and this summer I edited an issue of Perspectives on Language and Literacy focused on the early identification of reading difficulties. I'm serving on the Technical Work Group for the Institute of Education Sciences evaluation study of the Striving Readers grant program, and in November I will be speaking at Beijing Normal University. I'm also writing two papers for the Irish government. On the home front, Cyndie and I are eagerly awaiting our eighth grandchild (due 5 days before I submitted this). We plan on turning the China trip into a vacation and will have a trip purely

UPDATES FROM OUR MEMBERS, *continued*

for fun in February (that one to South Africa).

DON LEU



Emeritus, University of Connecticut
donald.leu@uconn.ed

I retired in September and now Debbie and I have moved to Semiahmoo, a resort community near Bellingham, WA. We can now spend more time on our boat, Change of Latitude, in coastal WA, BC, and AK waters. I continue as PI of the FACTORS research grant from the Institute of Education Sciences. We really enjoy the Pacific Northwest, especially winter cruising.